

PPUC/DMD INSTALL MANUAL

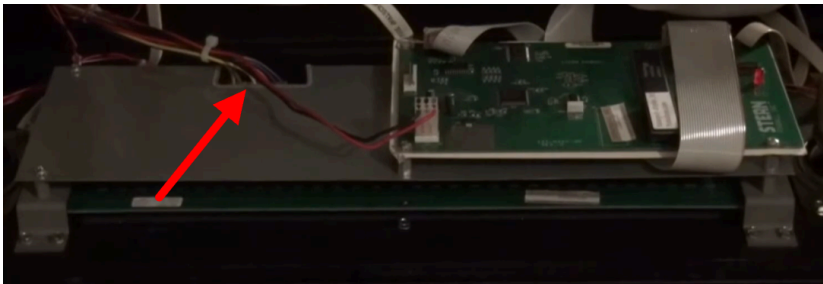
STERN WHITESTAR

⚠ Caution ⚠

Before installing a PPUC/DMD, **TURN OFF THE PINBALL MACHINE.** Only qualified personnel should work on pinball hardware or high-voltage electronics. Use common sense—do not experiment. Any damage to your game from unauthorized use is your own responsibility.

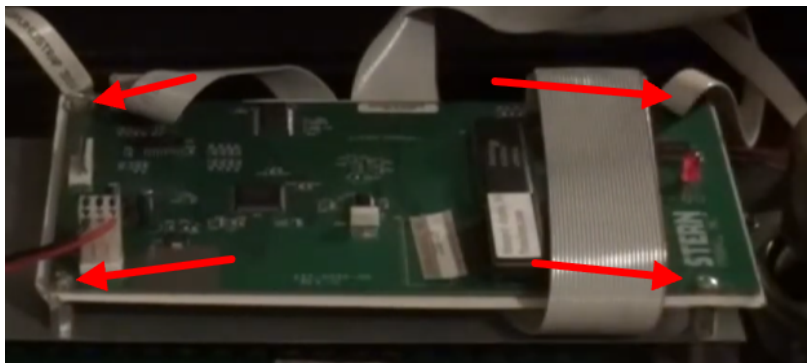
Step 1

- Open the backbox and let the speaker panel rest onto the game.
- Unplug the main DMD power cable.



Step 2

- Undo the 4 screws holding the display controller board in place. Store the 4 screws somewhere safe for later.
- Place the display controller board to the side in the backbox for now. We will secure it onto the new DMD later.



Continue on the next page ...

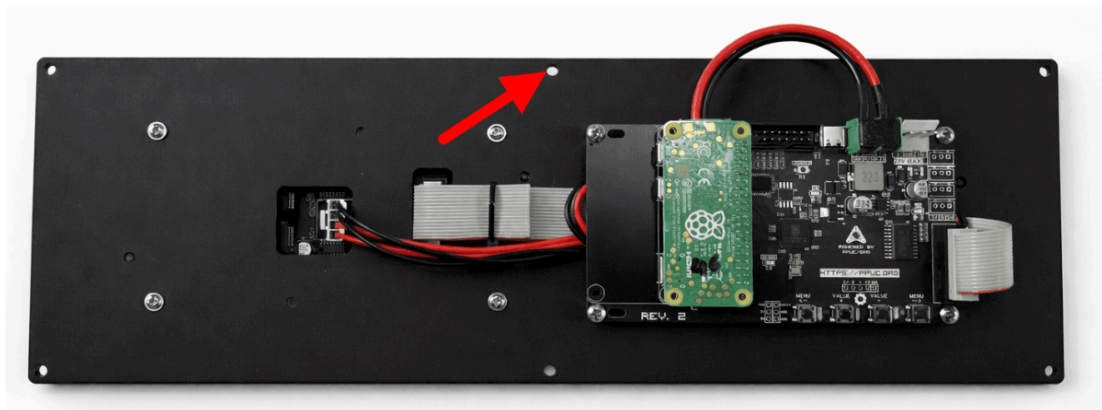
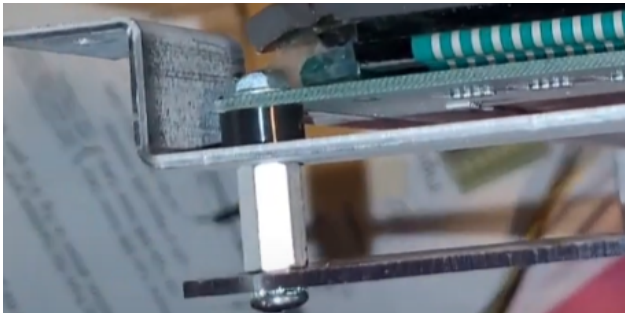
Step 3

- Undo the DMD data ribbon cable connected to the original DMD. Place it to the side for later.
- Be sure the metal plate seen in the picture is removed entirely. The 2 screws over to the left with green arrows will be used again later to secure the display controller board. Place those to the side.
- Now also undo all 8 screws holding the two metal brackets onto the wooden speaker panel, then remove the entire DMD assembly from the game.



Step 4

- Remove the current DMD from the metal brackets by undoing the screws.
- Out of the 4 total black spacers, you will need to re-use 2 of them. One can be seen in the left picture below.
- The long standoff and screw secured to the original DMD will also be used again, seen in the right picture. Remove it and screw it into the middle slot of the PPU/DMD acrylic bracket. See the red arrow in the third picture for its location. The screw should be on the LED panel side.



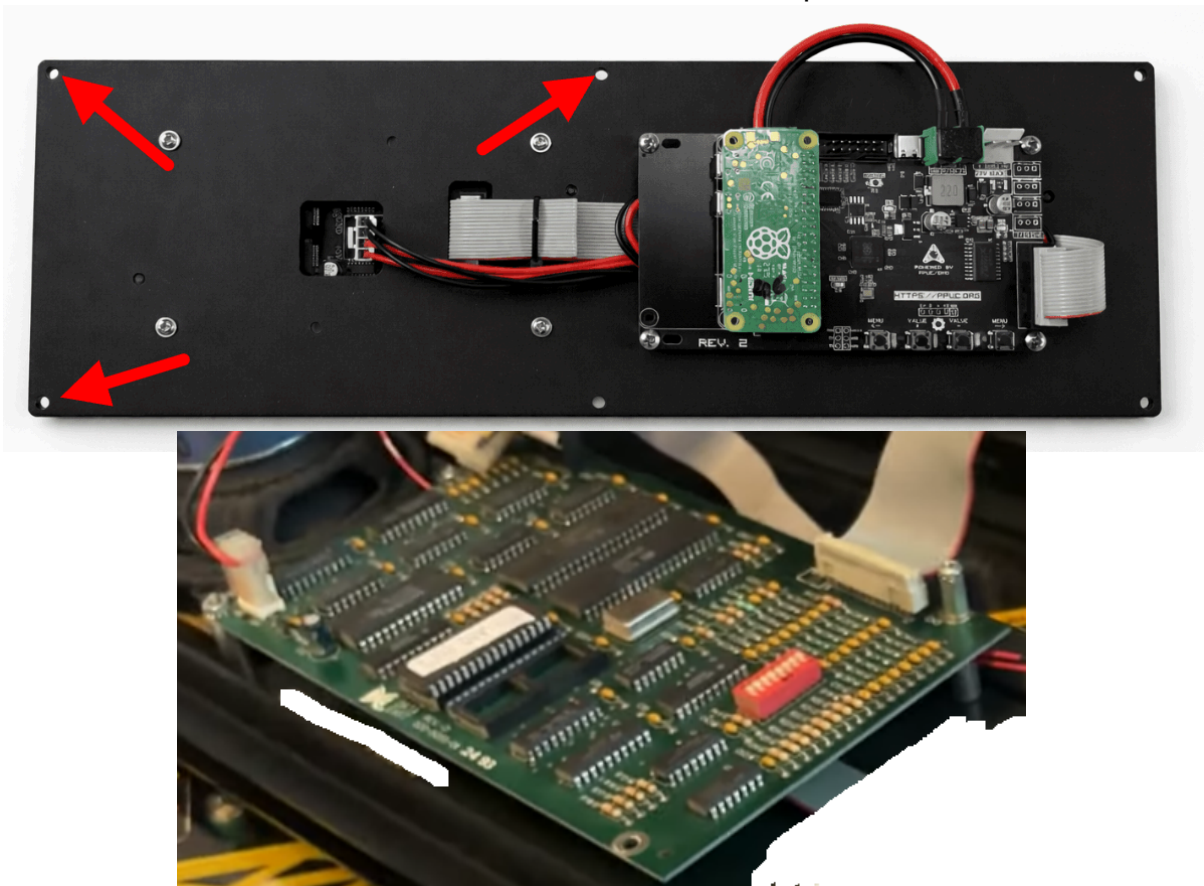
Step 5

- Now Place the PPUC/DMD onto the two metal brackets in the same orientation as seen in the third picture from step 4. Be sure that on the left side instead of only having the two standoffs, the black spacer is used in-between each standoff and the metal bracket! See picture to the right for correct reference.



Step 6

- Finally it is time to mount back the display controller board. Using screws from step 2 and 3, secure the controller board. It is true that the corner closest to you in the middle will be floating. Feel free to secure at your own will. (see red arrows point to where the display driver board will be secured).
- A similar look of the result is shown in the second picture.



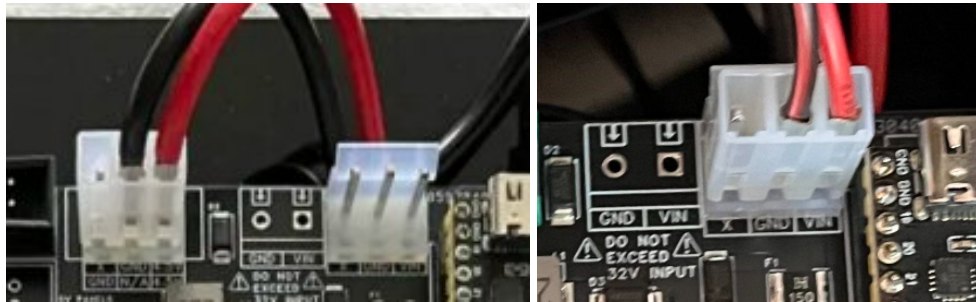
Step 7

- Remove playfield glass and slide out playfield.
- Grab the power cable provided. Connect the male molex connector to the female connector seen in the bottom right of the cabinet.
- Route the other end of the power cable all the way up into the backbox.



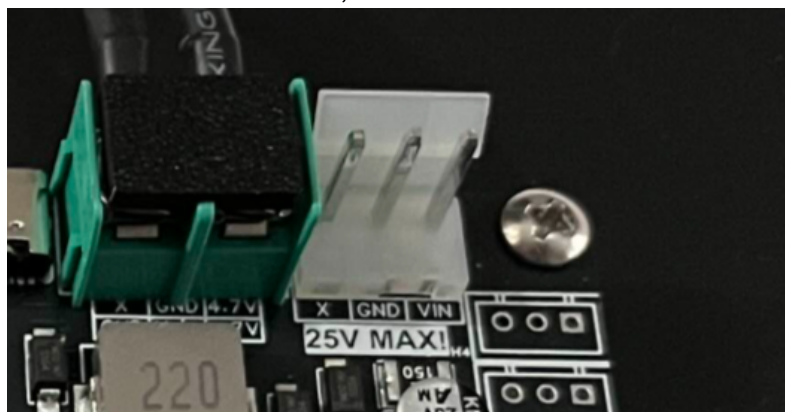
Step 8A (Only for PPUC/DMD's received in 2025!)

- Connect the "PANEL VOLTAGE" connector seen in the left picture below.
- Using the other end of the power cable you just connected during step 7, insert it into the socket closest to the USB-C connector. See picture the right most picture below.



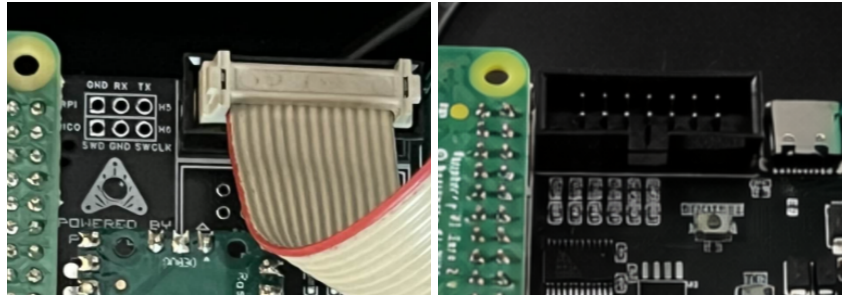
Step 8B (Only for PPUC/DMD's received in 2026 or later!)

- Using the other end of the power cable you just connected during step 7, insert it into the socket where X, GND and VIN are located.



Step 9

- Hook up the DMD ribbon cable to the PPUC/DMD board. The red wire should be on the left side.



End of installation. Turn on your game and enjoy your new color display!
For any questions or when having technical difficulties: feel free to contact me through <https://janspinballmods.com/contact> or on Pinside / Flippermarkt.