

PPUC/DMD INSTALL MANUAL

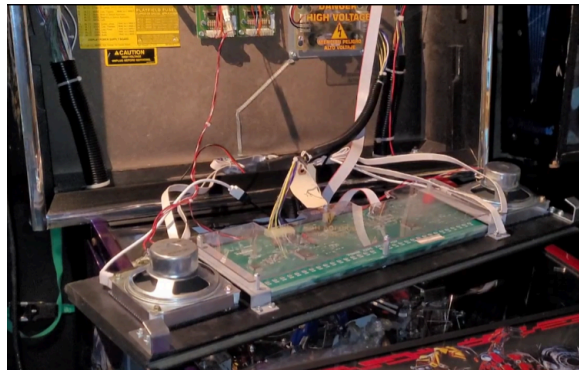
STERN SAM - WOODEN SPEAKER PANEL

⚠ Caution ⚠

Before installing a PPUC/DMD, **TURN OFF THE PINBALL MACHINE.** Only qualified personnel should work on pinball hardware or high-voltage electronics. Use common sense—do not experiment. Any damage to your game from unauthorized use is your own responsibility.

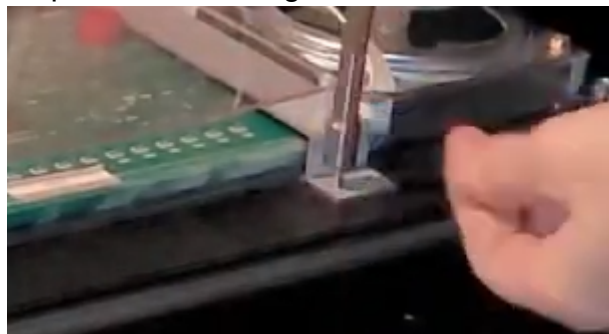
Step 1

- Open the backbox and let the speaker panel rest onto the game, disconnect the DMD power and ribbon cables.
- Unplug the other end of the DMD power cable from the backbox and remove it completely from the game.



Step 2

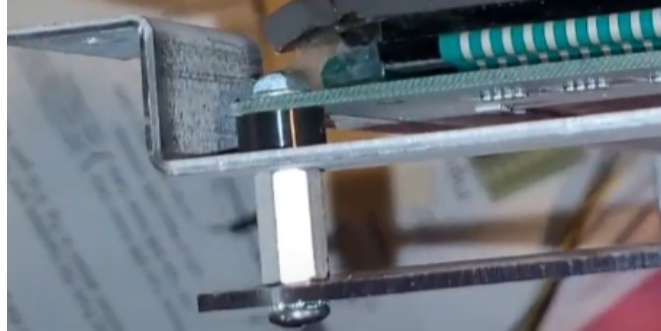
- Undo all 8 screws holding the two metal brackets onto the wooden speaker panel, then remove the entire DMD assembly from the game.
- If present, carefully detach the transparent colored plastic film from the wooden speaker panel. It's no longer needed.



Continue on the next page ...

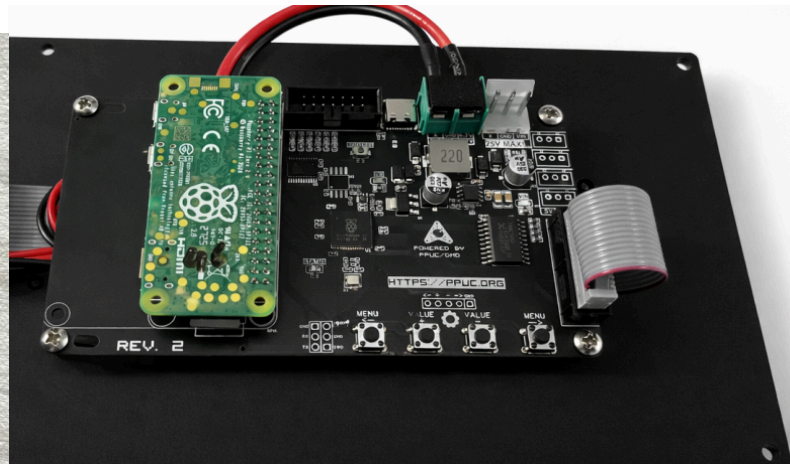
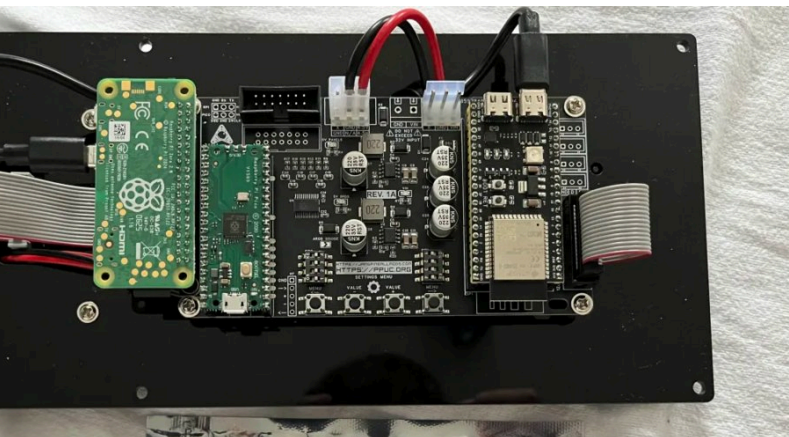
Step 3

- Remove the clear display cover on the back of the DMD assembly if still present. Space is required for the PPUC/DMD PCB.
- Remove the current DMD from the metal brackets by undoing the screws.
- You will no longer need the 4 black spacers, one can be seen in the picture below. Store these with the DMD you just removed.



Step 4

- Place the PPUC/DMD onto the two metal brackets in the same orientation as the previous DMD. Then use the previous four screws to secure it in place.
- Afterwards, secure the two metal brackets and grounding straps back onto the wooden speaker panel. Be sure that the buttons are closest to you when securing the DMD back on the speaker panel. See pictures below for reference.



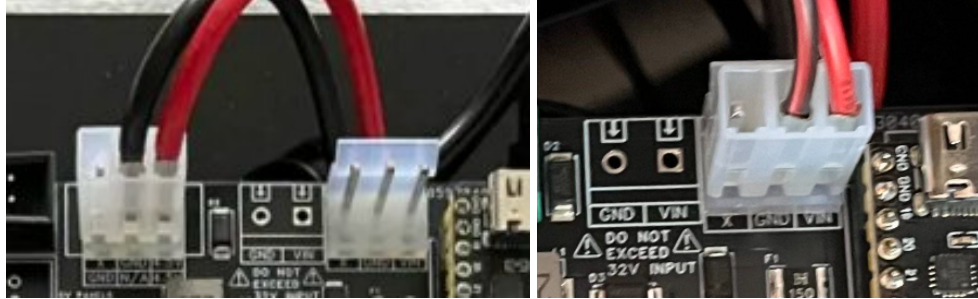
Step 5

- Remove playfield glass and slide out playfield.
- Grab the power cable provided. Connect the male molex connector to the female connector seen in the bottom right of the cabinet.
- Route the other end of the power cable all the way up into the backbox.



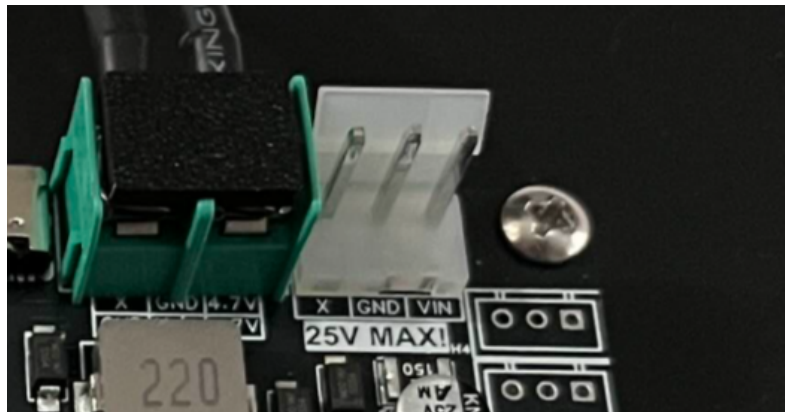
Step 6A (Only for PPUC/DMD's received in 2025!)

- Connect the “PANEL VOLTAGE” connector seen in the left picture below.
- Using the other end of the power cable you just connected during step 5, insert it into the socket closest to the USB-C connector. See picture the right most picture below.



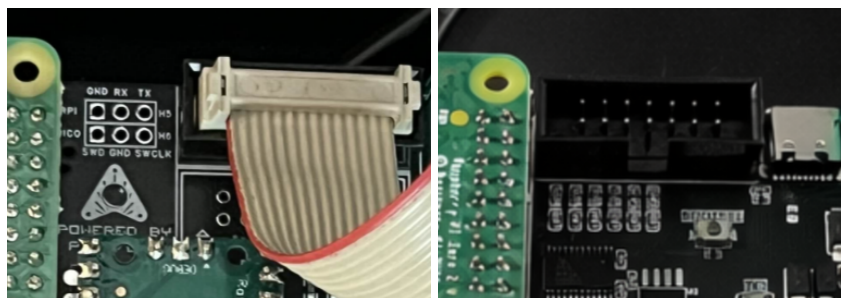
Step 6B (Only for PPUC/DMD's received in 2026 or later!)

- Using the other end of the power cable you just connected during step 5, insert it into the socket where X, GND and VIN are located.



Step 7

- Hook up the DMD ribbon cable to the PPUC/DMD board. The red wire should be on the left side.



End of installation. Turn on your game and enjoy your new color display!
For any questions or when having technical difficulties: feel free to contact me through <https://janspinballmods.com/contact> or on Pinside / Flippermarkt.