

PPUC/DMD INSTALL MANUAL

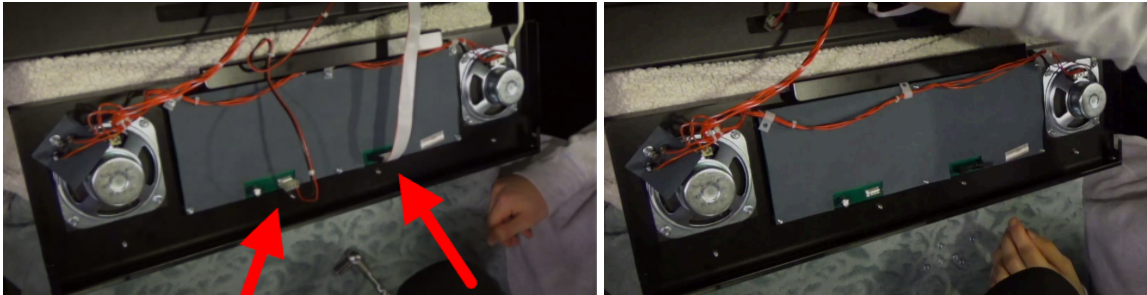
STERN SAM - METAL SPEAKER PANEL

⚠ Caution ⚠

Before installing a PPUC/DMD, **TURN OFF THE PINBALL MACHINE.** Only qualified personnel should work on pinball hardware or high-voltage electronics. Use common sense—do not experiment. Any damage to your game from unauthorized use is your own responsibility.

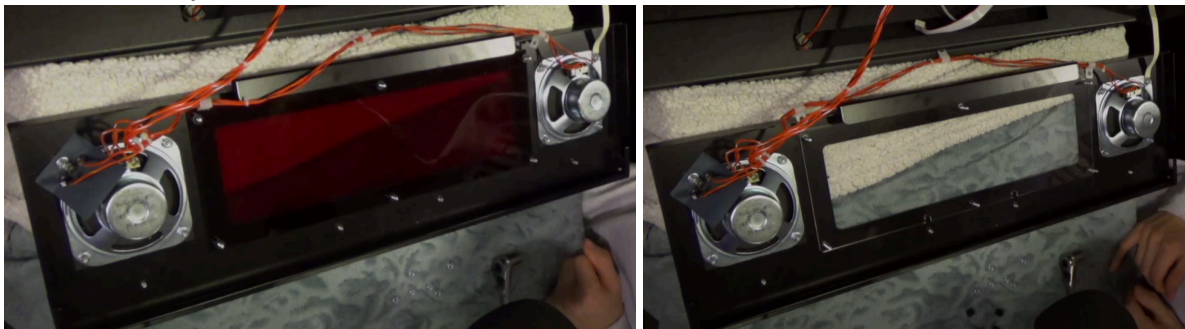
Step 1

- Open the backbox and let the speaker panel rest onto the game, disconnect the DMD power and ribbon cable. The stock DMD power cable will no longer be used.



Step 2

- Undo all 6 nuts holding the DMD in place. Remove the DMD, store the 6 nuts.
- If present, **remove the red transparent display cover**. Replace with a clear acrylic display cover if not already done so. Make sure to hold onto the 6 black spacers.



Continue on the next page ...

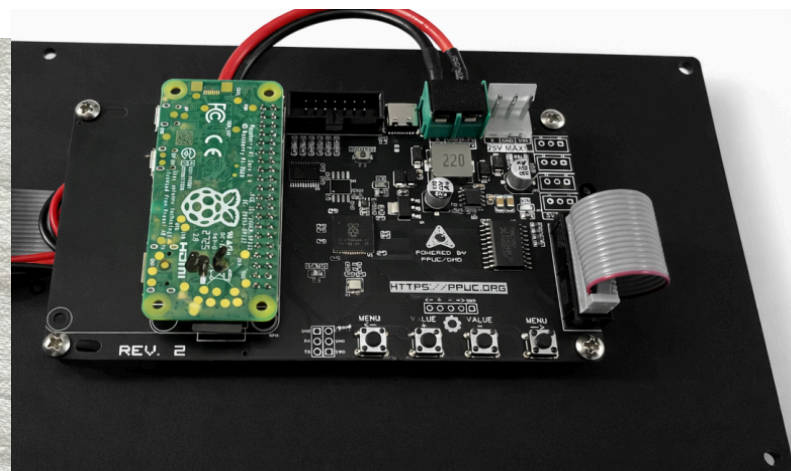
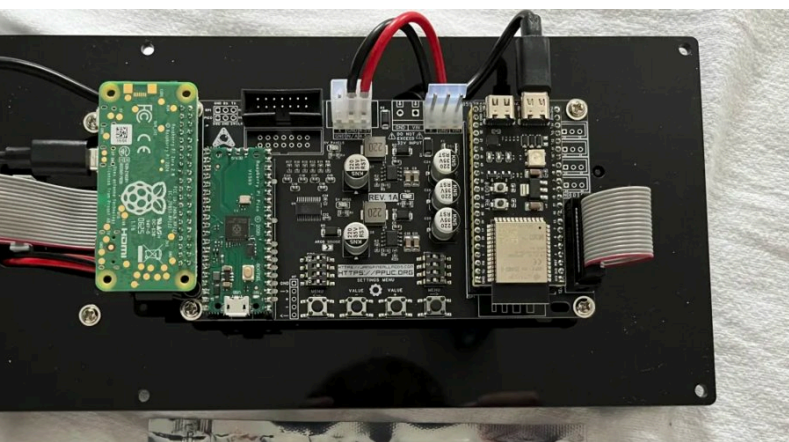
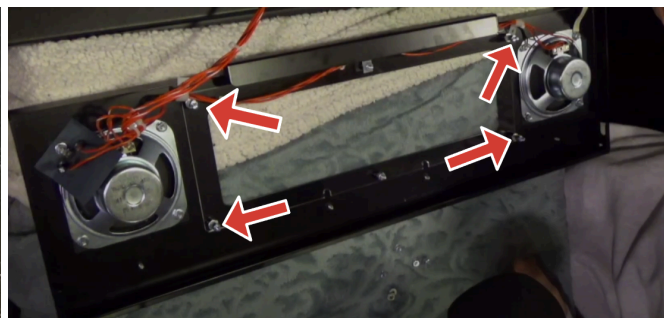
Step 3

- Reinstall all 6 black spacers in their original positions.
- For the top and bottom middle spacer, reinstall two of the six nuts that were removed during step 2. Also secure the cable guide. See two pictures below.



Step 4

- Included with the PPUC/DMD kit are 4 hex standoffs with 4 spacers. First place the black spacers in each corner on top of the stock black spacers. See red arrows in the right picture.
- Screw on the hex spacers seen in the left picture.
- Lay the PPUC/DMD on top of the hex spacers that were just installed. Grab the 4 remaining nuts and secure the DMD. Be sure that the buttons are facing towards you as seen in the pictures below.



Continue on the next page ...

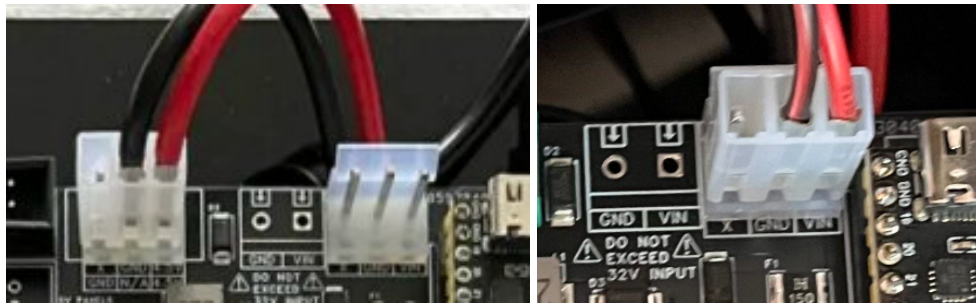
Step 5

- Remove playfield glass and slide out playfield.
- Grab the power cable provided. Connect the male molex connector to the female connector seen in the bottom right of the cabinet.
- Route the other end of the power cable all the way up to the backbox.



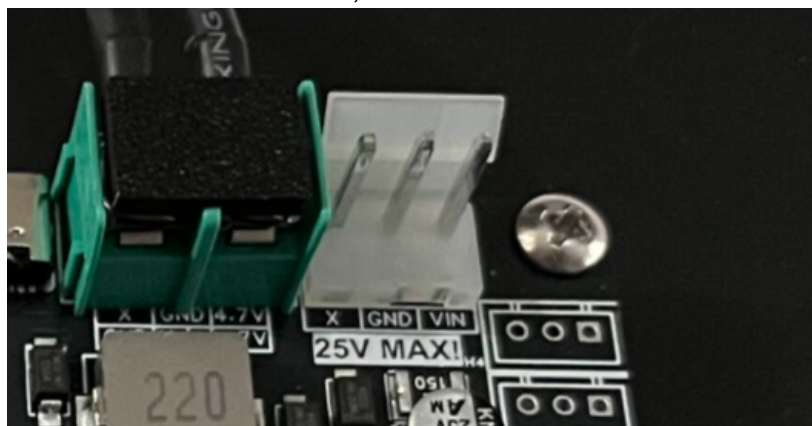
Step 6A (Only for PPUC/DMD's received in 2025!)

- Connect the "PANEL VOLTAGE" connector seen in the left picture below.
- Using the other end of the power cable you just connected during step 5, insert it into the socket closest to the USB-C connector. See picture the right most picture below.



Step 6B (Only for PPUC/DMD's received in 2026 or later!)

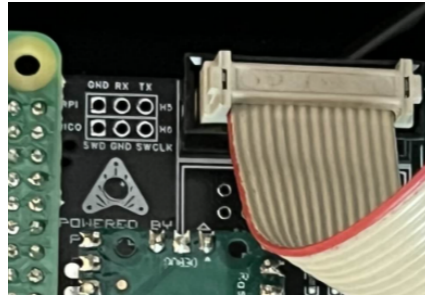
- Using the other end of the power cable you just connected during step 5, insert it into the socket where X, GND and VIN are located.



Continue on the next page ...

Step 7

- Hook up the DMD ribbon cable to the PPUC/DMD board. The red wire should be pointing towards the “Powered by PPUC/DMD” text.



**End of installation. Turn on your game and enjoy your new color display!
For any questions or when having technical difficulties: feel free to contact me
through <https://janspinballmods.com/contact> or on Pinside / Flippermarkt.**